

Installation de pfSense

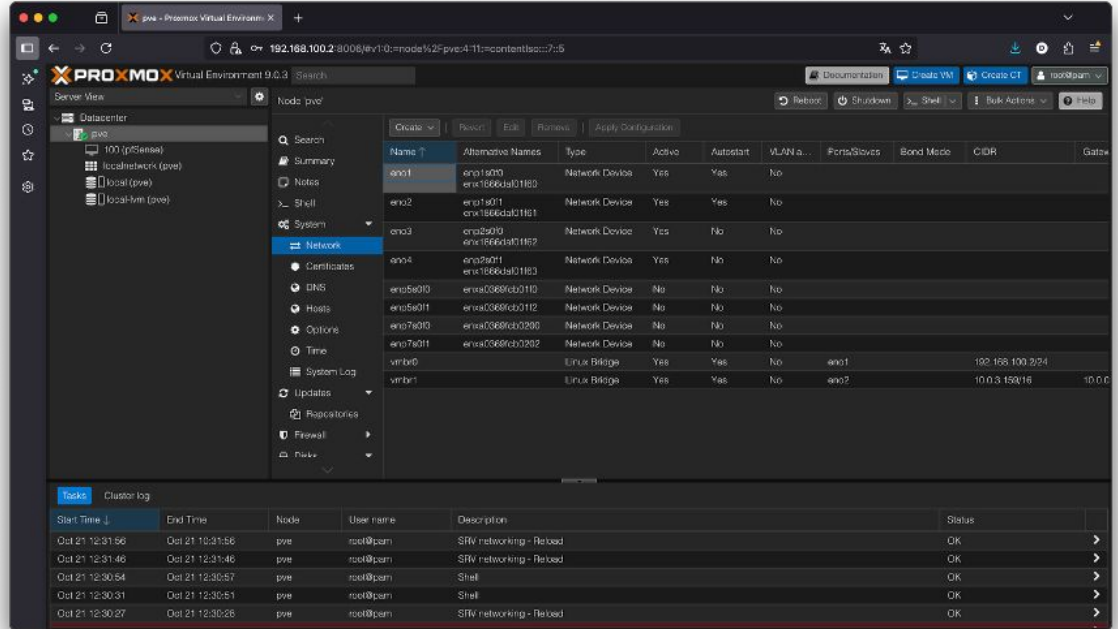
Vous retrouverez une image et une indication pour chacune des étapes d'installation.



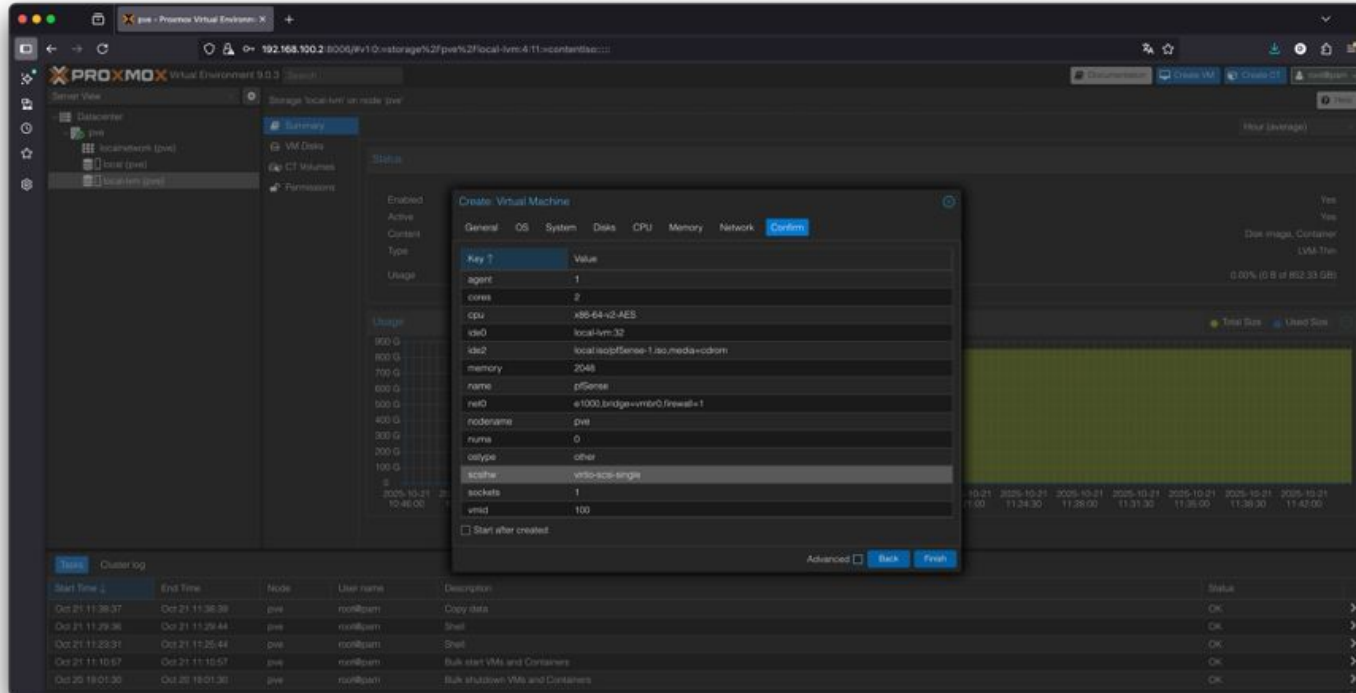
Configuration des interfaces LAN / WAN dans Proxmox

Configuration du réseau

- Vmbr0 = LAN branché à la prise 15 de la salle de classe
- Vmbr1 = WAN branché au switch)
- Passerelle WAN : 10.0.0.1



Création de la VM pfSense




The screenshot shows the Proxmox VE interface with the 'Create Virtual Machine' dialog box open. The dialog is configured with the following settings:

Key	Value
agent	1
cores	2
cpu	x86-64-v2-AES
ide0	local-lvm:32
ide2	local:scsiSense-1.iso;media=cdrom
memory	2048
name	pfSense
net0	e1000,bridge=vbr0,firewall=1
node name	pro
numa	0
ostype	other
scsihw	virtio-scsi-single
sockets	1
vmsd	100

The 'Confirm' button is highlighted in blue. Below the dialog, a table shows the cluster log with columns for Start Time, End Time, Node, User name, Description, and Status.

Start Time	End Time	Node	User name	Description	Status
Oct 21 11:36:37	Oct 21 11:36:38	pro	root@pro	Copy data	OK
Oct 21 11:39:38	Oct 21 11:39:44	pro	root@pro	Shell	OK
Oct 21 11:39:41	Oct 21 11:39:44	pro	root@pro	Shell	OK
Oct 21 11:10:57	Oct 21 11:10:57	pro	root@pro	Bulk start VMs and Containers	OK
Oct 20 18:01:30	Oct 20 18:01:30	pro	root@pro	Bulk shutdown VMs and Containers	OK

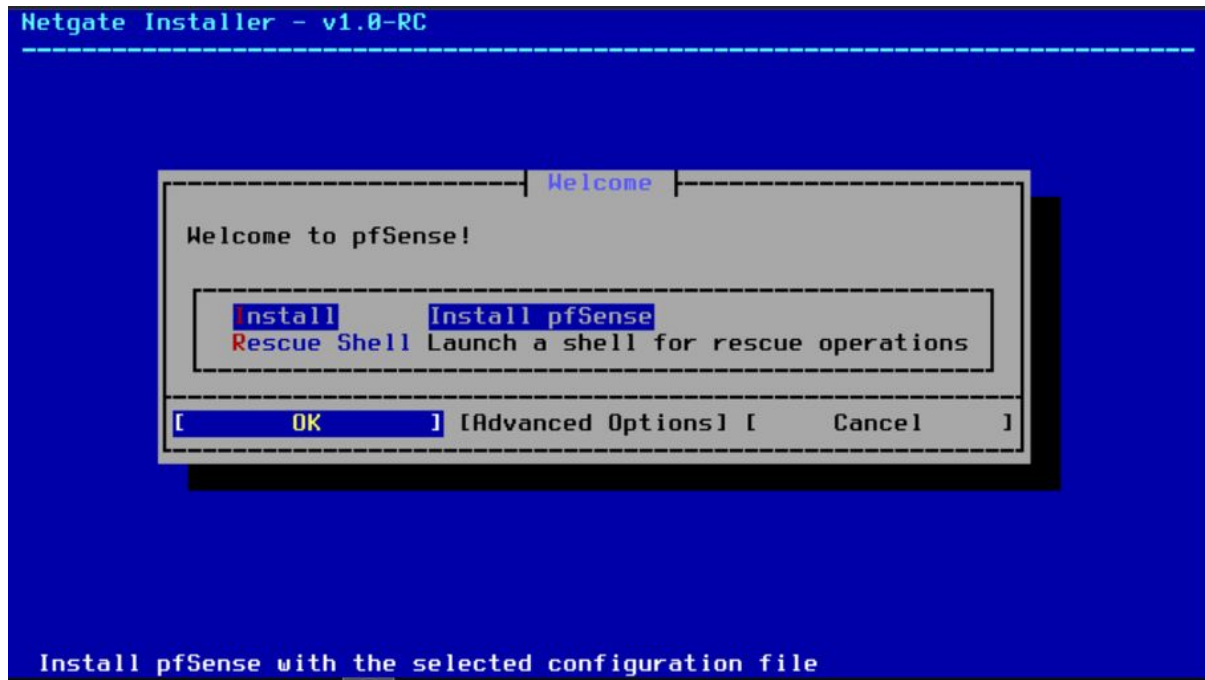
Ajout des interfaces (LAN et WAN)



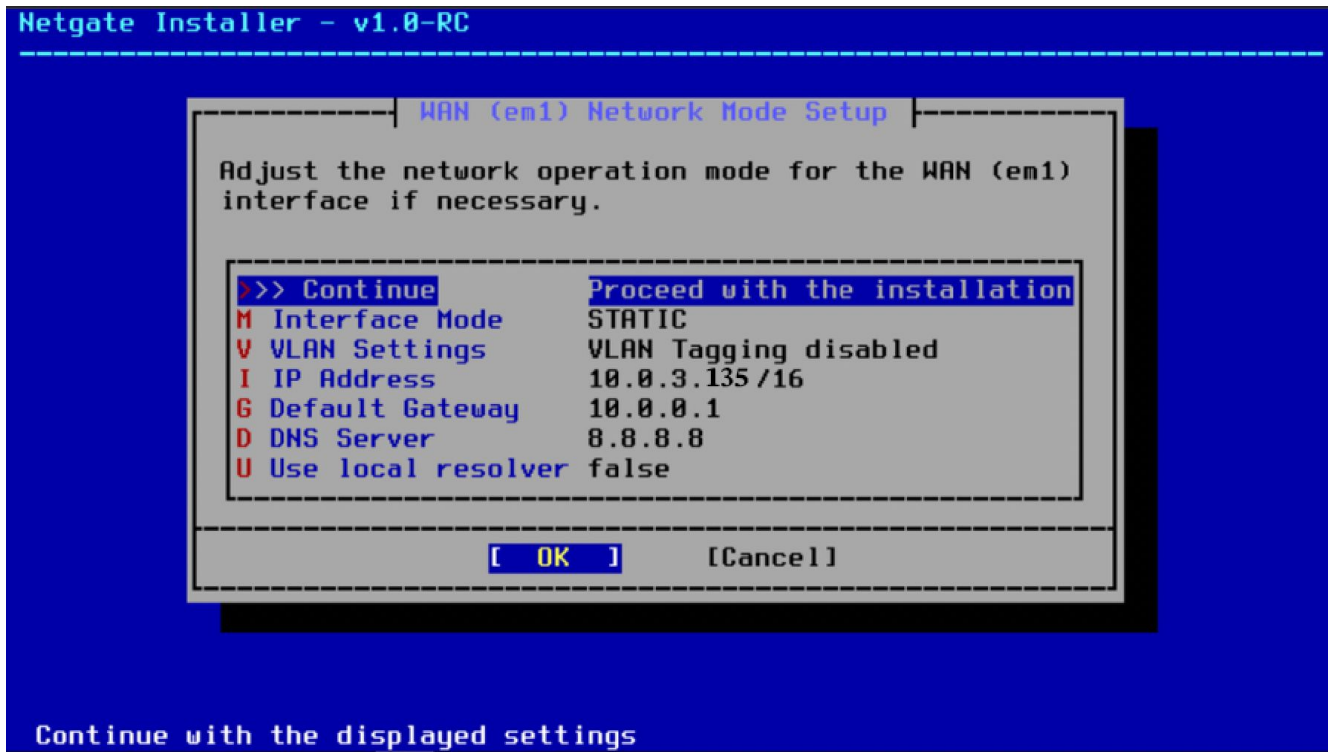
>_ Console	Memory	2.00 GiB
Hardware	Processors	2 (1 sockets, 2 cores) [x86-64-v2-AES]
Cloud-Init	BIOS	Default (SeaBIOS)
Options	Display	Default
Task History	Machine	Default (i440fx)
Monitor	SCSI Controller	VirtIO SCSI single
Backup	Hard Disk (ide0)	local-lvm:vm-100-disk-0,size=32G
Replication	CD/DVD Drive (ide2)	local:iso/pfSense-1.iso,media=cdrom,size=966536K
Snapshots	Network Device (net0)	e1000=BC:24:11:81:00:C2,bridge=vmbro,firewall=1
	Network Device (net1)	e1000=BC:24:11:11:8F:F6,bridge=vmbro,firewall=1

Lancer la VM

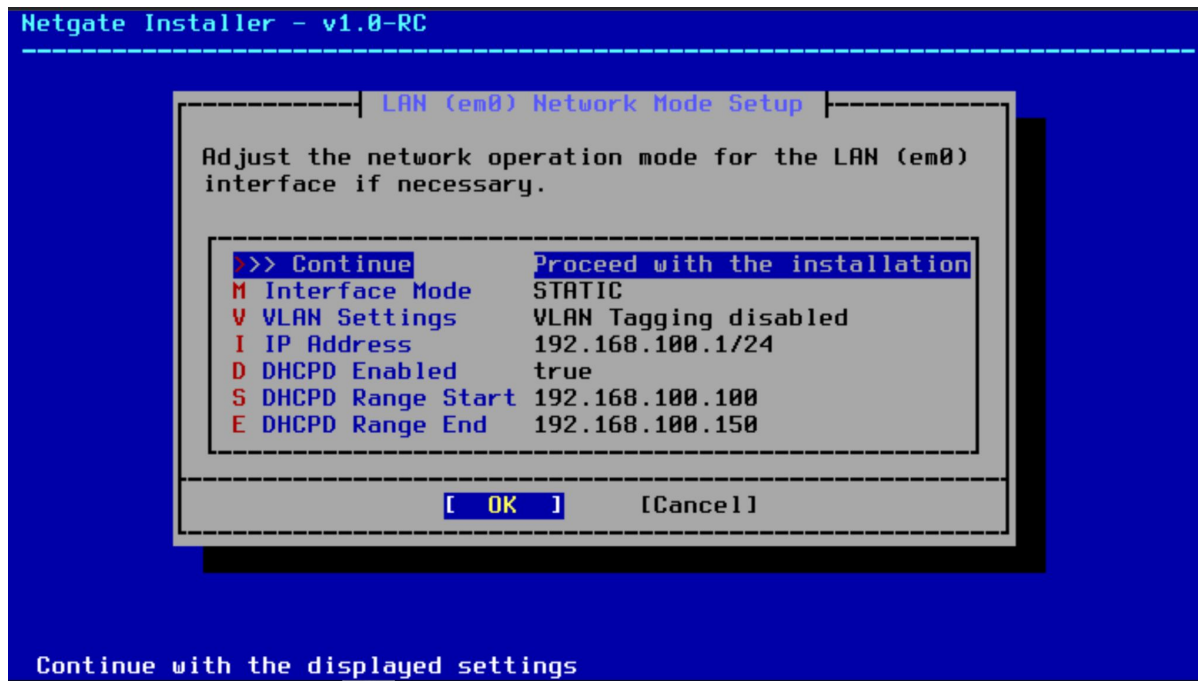
Installation pfSense (v 2.8.1 CE edition)



Interface WAN renseigner une IP static si disponible,
sinon faire DHCP et ajouter l'IP static plus tard



Interface LAN avec pool DHCP



WAN -> em1
LAN -> em0

Do you want to proceed [y|n]? y

Writing configuration...done.

One moment while the settings are reloading... done!

QEMU Guest - Netgate Device ID: 1cc5f9081c1d20aebacf

*** Welcome to pfSense 2.8.1-RELEASE (amd64) on pfSense ***

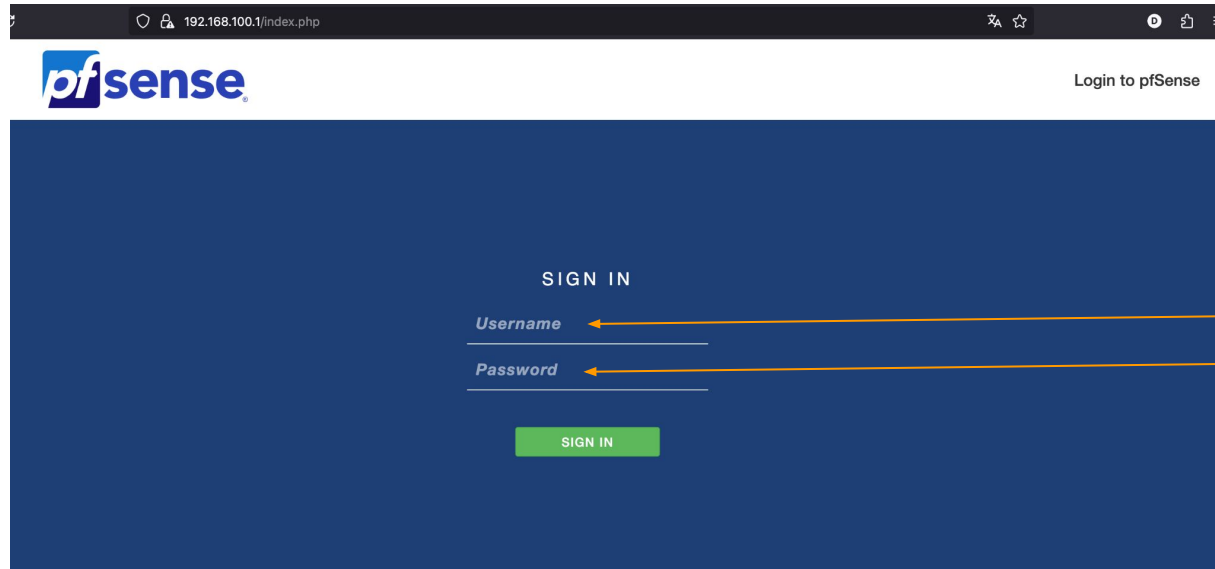
WAN (wan) -> em1 ->

LAN (lan) -> em0 -> v4: 192.168.100.1/24

- | | |
|-------------------------------------|----------------------------------|
| 0) Logout / Disconnect SSH | 9) pfTop |
| 1) Assign Interfaces | 10) Filter Logs |
| 2) Set interface(s) IP address | 11) Restart GUI |
| 3) Reset admin account and password | 12) PHP shell + pfSense tools |
| 4) Reset to factory defaults | 13) Update from console |
| 5) Reboot system | 14) Enable Secure Shell (sshd) |
| 6) Halt system | 15) Restore recent configuration |
| 7) Ping host | 16) Restart PHP-FPM |
| 8) Shell | |

Enter an option: █

Accéder à pfsense via son IP dans son interface LAN



The screenshot shows a web browser window with the address bar displaying '192.168.100.1/index.php'. The page features the pfSense logo in the top left and a 'Login to pfSense' link in the top right. The main content area has a dark blue background with a 'SIGN IN' heading. Below the heading are two input fields: 'Username' and 'Password'. A green 'SIGN IN' button is positioned at the bottom of the form. Two orange arrows originate from the right side of the image: one points to the 'Username' field and the other points to the 'Password' field.

192.168.100.1/index.php

pfSense

Login to pfSense

SIGN IN

Username

Password

SIGN IN

Par défaut :

admin

pfsense

Status / Dashboard



System Information



Name	pfSense.bts.sio
User	admin@192.168.100.99 (Local Database)
System	QEMU Guest Netgate Device ID: 1cc5f9081c1d20aebacf
BIOS	Vendor: SeaBIOS Version: rel-1.16.3-0-ga6ed6b701f0a-prebuilt.qemu.org Release Date: Tue Apr 1 2014 Boot Method: BIOS
Version	2.8.1-RELEASE (amd64) built on Tue Sep 9 16:29:00 UTC 2025 FreeBSD 15.0-CURRENT The system is on the latest version. Version information updated at Wed Oct 29 11:26:00 UTC 2025
CPU Type	QEMU Virtual CPU version 2.5+ 4 CPUs : 1 package(s) x 4 core(s) AES-NI CPU Crypto: Yes (inactive) QAT Crypto: No

Netgate Services And Support



Contract type **Community Support**
Community Support Only

NETGATE AND pfSense COMMUNITY SUPPORT RESOURCES

If you purchased your pfSense gateway firewall appliance from Netgate and elected **Community Support** at the point of sale or installed pfSense on your own hardware, you have access to various community support resources. This includes the [NETGATE RESOURCE LIBRARY](#).

You also may upgrade to a Netgate Global Technical Assistance Center (TAC) Support subscription. We're always on! Our team is staffed 24x7x365 and committed to delivering enterprise-class, worldwide support at a price point that is more than competitive when compared to others in our space.

- [Upgrade Your Support](#)
- [Community Support Resources](#)
- [Netgate Global Support FAQ](#)
- [Official pfSense Training by Netgate](#)
- [Netgate Professional Services](#)
- [Visit Netgate.com](#)